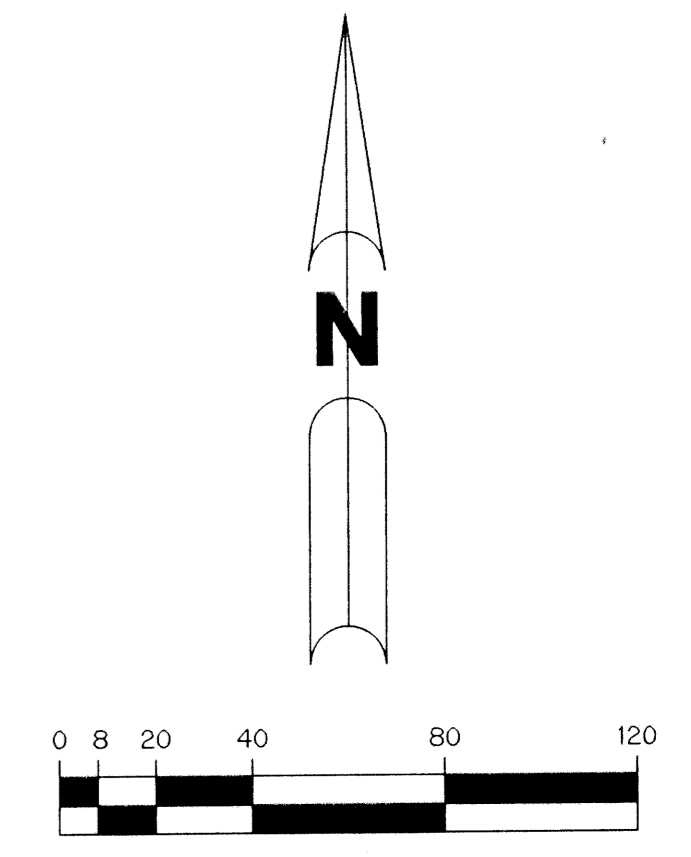
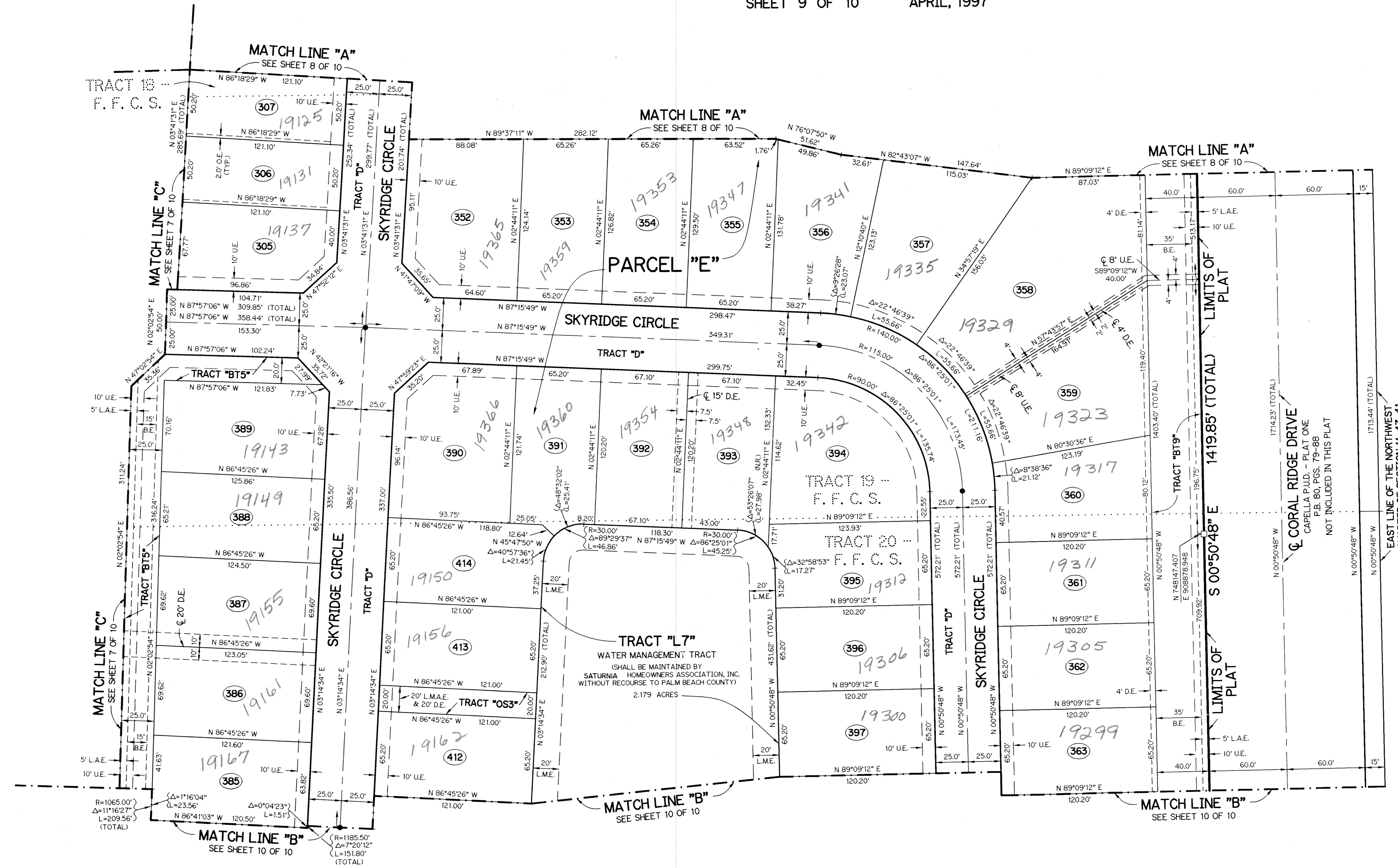


A PLANNED UNIT DEVELOPMENT

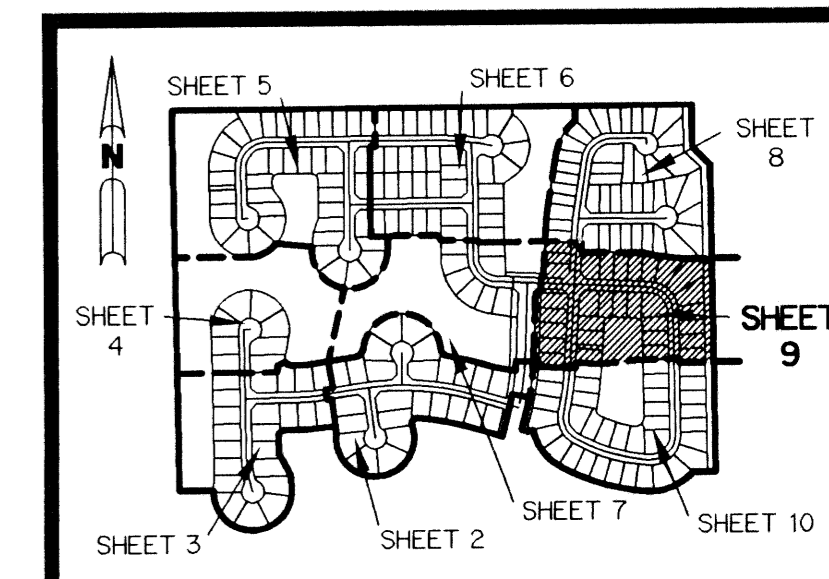
CAPELLA P.U.D. - PLAT TWO

BEING A REPLAT OF A PORTION OF TRACTS 17, 18, 19, 20, 21, 22, 27 AND 28 AND ALL OF TRACTS 29, 30, 31 AND 32, ALL ACCORDING TO THE PLAT OF FLORIDA FRUIT LANDS COMPANY'S SUBDIVISION NO. 2 AS RECORDED IN PLAT BOOK 1, PAGE 102 OF THE PUBLIC RECORDS OF PALM BEACH COUNTY, FLORIDA. LYING IN SECTION 11, TOWNSHIP 47 SOUTH, RANGE 41 EAST.

SHEET 9 OF 10 APRIL, 1997



- LEGEND:**
- - PERMANENT REFERENCE MONUMENT, PLS #4213
 - - FOUND PERMANENT REFERENCE MONUMENT, PLS #4213
 - - PERMANENT CONTROL POINT, PLS #4213
 - Δ - DELTA ANGLE
 - ⊕ - BUFFER EASEMENT
 - ⊖ - CENTERLINE
 - D.E. - DRAINAGE EASEMENT
 - F.F.C.S. - FLORIDA FRUIT LANDS COMPANY'S SUBDIVISION NO. 2 (P.B. 1, PG. 102)
 - L - ARC LENGTH
 - L.A.E. - LIMITED ACCESS EASEMENT
 - L.M.A.E. - LAKE MAINTENANCE ACCESS EASEMENT
 - L.M.E. - LAKE MAINTENANCE EASEMENT
 - L.W.D.D. - LAKE WORTH DRAINAGE DISTRICT
 - N.R. - NOT RADIAL
 - N.T.S. - NOT TO SCALE
 - O.E. - OVERHANG EASEMENT
 - O.R.B. - OFFICIAL RECORD BOOK
 - O.S. - OPEN SPACE
 - P.B. - PLAT BOOK
 - PGS. - PAGES
 - P.S.M. - PROFESSIONAL SURVEYOR AND MAPPER
 - R - RADIUS
 - R/W - RIGHT-OF-WAY
 - S.T. - SURVEY TIE
 - U.E. - UTILITY EASEMENT
 - N 737648.0171 - DENOTES STATE PLANE COORDINATES
 - E 905258.2326



KEY MAP
N.T.S.

A070 SHEET 9 OF 10

THIS INSTRUMENT PREPARED BY
PERRY C. WHITE, P.S.M. 4213, STATE OF FLORIDA
LAWSON, NOBLE AND WEBB, INC.
ENGINEERS PLANNERS SURVEYORS
WEST PALM BEACH, FLORIDA

NOTE:
COORDINATES SHOWN ARE GRID COORDINATES
COORDINATE SYSTEM = 1983 STATE PLANE TRANSVERSE MERCATOR PROJECTION
DATUM = NAD 83 (1990 ADJUSTMENT)
ZONE = FLORIDA EAST ZONE
LINEAR UNIT = U.S. SURVEY FEET
SCALE FACTOR = 1.0000128
BEARING ROTATION = 0°11'11" COUNTERCLOCKWISE (PLAT TO GRID)
ALL DISTANCES ARE GROUND DISTANCES UNLESS OTHERWISE NOTED

SUBDIVISION - CAPELLA P.U.D.
BOOK - 81
PAGE - 157
FLOOD ZONE - AO
FLOOD MAP # - 100B
ZONING P.U.D./T.D.R.
QUAD # - 68
ZIP CODE - 33499
PUB NAME - CAPELLA P.U.D.